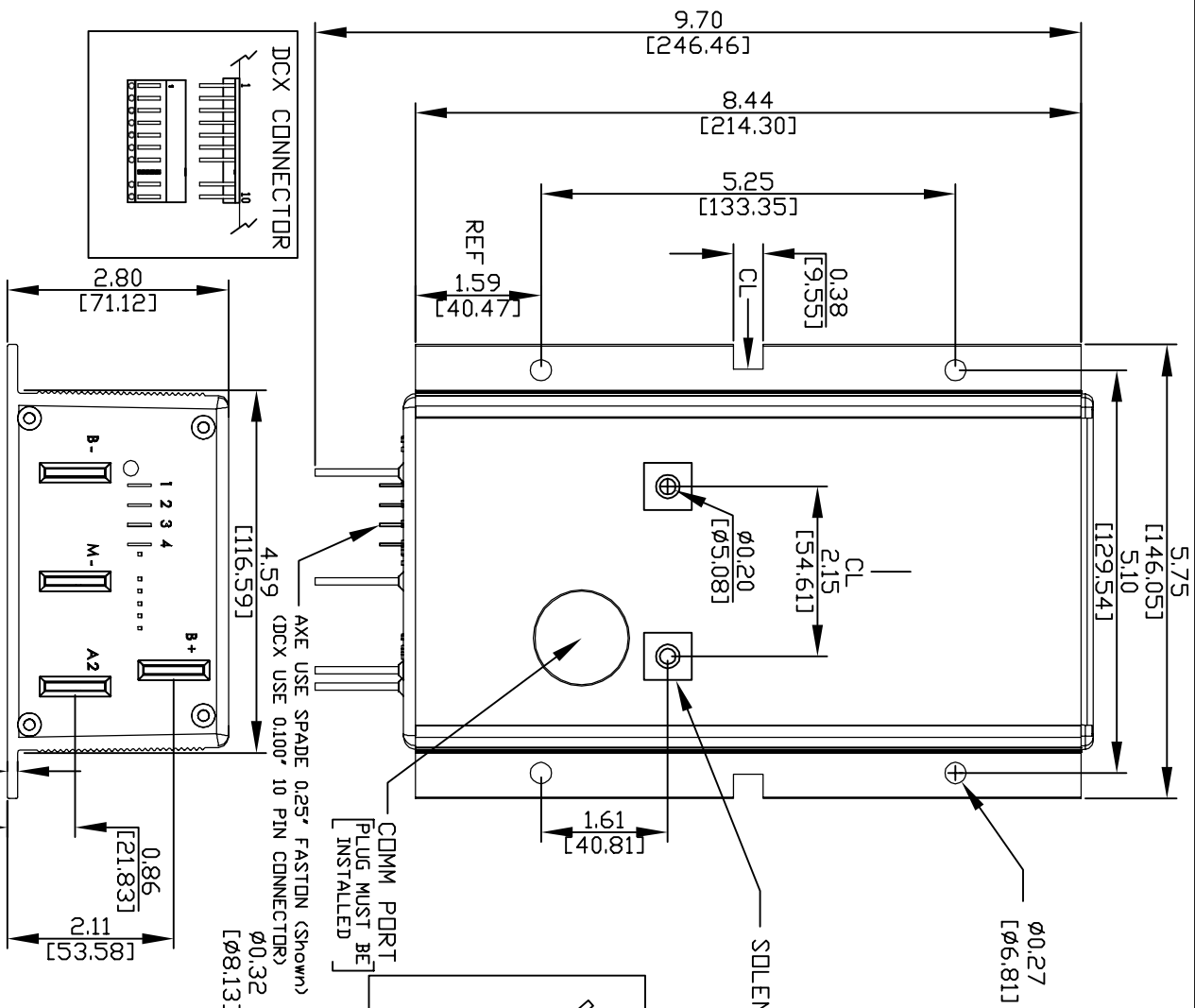
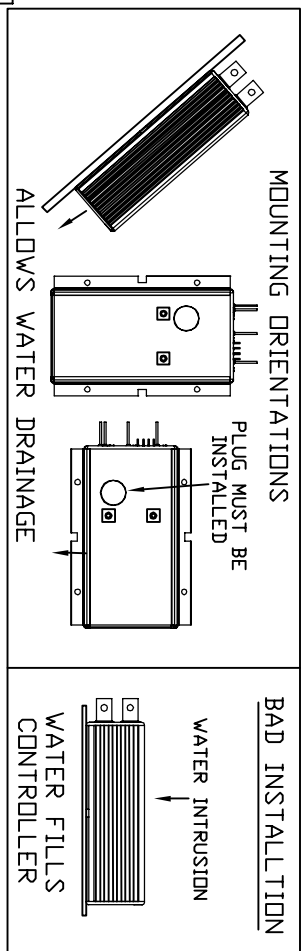
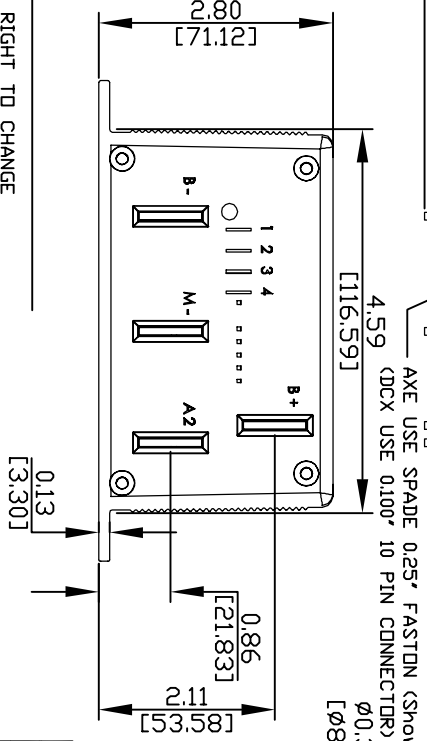
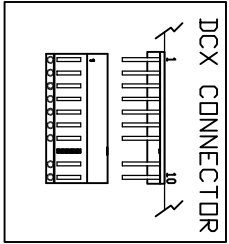


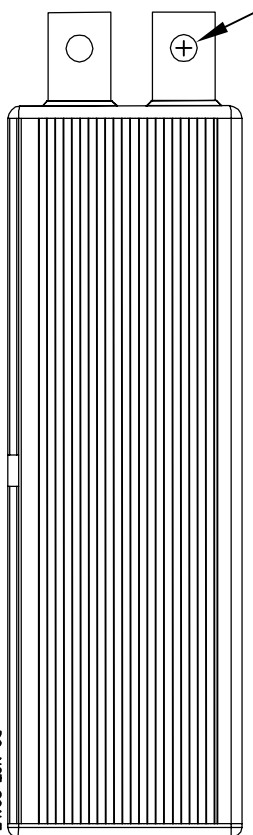
PART NO.	Doc100-036
----------	------------



NOTES:
 > ALLTRAX RESERVES THE RIGHT TO CHANGE
 > DOCUMENTATION WITHOUT NOTICE
 > ALLTRAX MAKES NO WARRANTY AS TO THE ACCURACY,
 SUFFICIENCY, OR SUITABILITY OF ANY TECHNICAL
 OR OTHER INFORMATION PROVIDED
 > SEE OPERATORS MANUAL FOR MORE INFORMATION



CONTROLLER SPECIFICATIONS:
 *Material: Blue Anodized ALUMINUM
 *Thermal Compound: Optional
 *Heatsink mounted to 3/8" ALUMINUM plate, approx 144" sq in
 or larger.
 *Torque mounting screws to 20 ft./lbs



DO NOT SCALE DRAWING

REVISIONS				DWG SCALE: NTS		TITLE	
REV.	ECO.	DATE	APVD	DRAWN	ENGR	DATE	
A	010407	010407	TT	T.Thorne	C.Piehl	122006	HEATSINK MOUNTING DRAWING

PROPRIETARY	1111 Cheney Creek Rd. Grants Pass, OR 97527 PHONE:(541) 476-3585
THIS DRAWING, DATA, AND INFORMATION ARE UNCLASSIFIED AND SHALL NOT BE USED, REPRODUCED, COPIED, OR DISSEMINATED IN WHOLE OR PART WITHOUT WRITTEN PERMISSION OF ALLTRAX INC.	

SIZE	DOCUMENT NO.	REV.
A	Doc100-036	A

ALLTRAX
 1111 Cheney Creek Rd.
 Grants Pass, OR 97527
 PHONE:(541) 476-3585